

TMC Operational Coordination

2024 Future Vision

Abe Khouri
Director, TMC Operational Coordination

March 2022

Transport pays respects to Elders past and present, and recognise and celebrate the diversity of Aboriginal peoples and their ongoing cultures and connections to the lands and waters of NSW



Overview

- 2024 vision for TMC Operational Coordination
- Integration of a new Surface Transport Team into TMC Operational Coordination



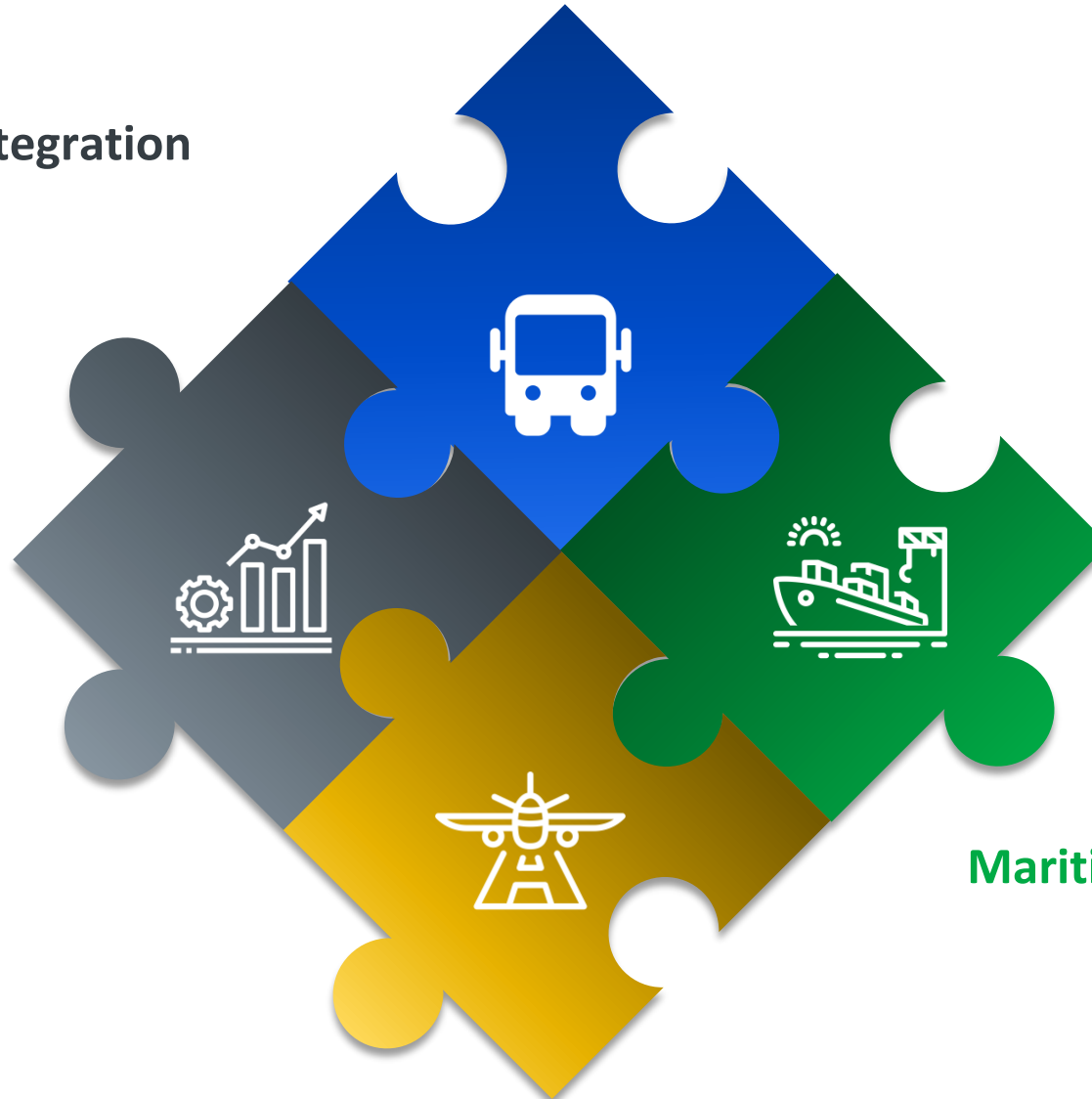
Future Vision 2024

Optimisation & Integration

Proactive
Active Transport
New Infrastructure

Surface Transport

Enhancement
Collaboration
Alignment



Airport Precincts

Integration
Impacts
Awareness

Maritime, Ports & Freight

Intermodal
Relationships
Demands

Immediate Priority

- The Network Control Centre will be decommissioned the first week of April creating a significant coordination gap
- Interim Surface Transport team will be stood up in the TMC to compliment existing resources
- This team will transition with us into our 2024 Future Vision



Introduction of Interim Surface Transport

What's the Surface Operational team look like?

1 X Director Surface Transport Coordination

6 X Senior Transport Operations Controllers

Supporting this will be a Project Lead and a Change Lead

What's their remit in the interim phase

Coordination of contracted bus services, oversight of special event bussing, and rail replacement bussing

Oversee planned and unplanned disruptions of the surface transport network – bus operators

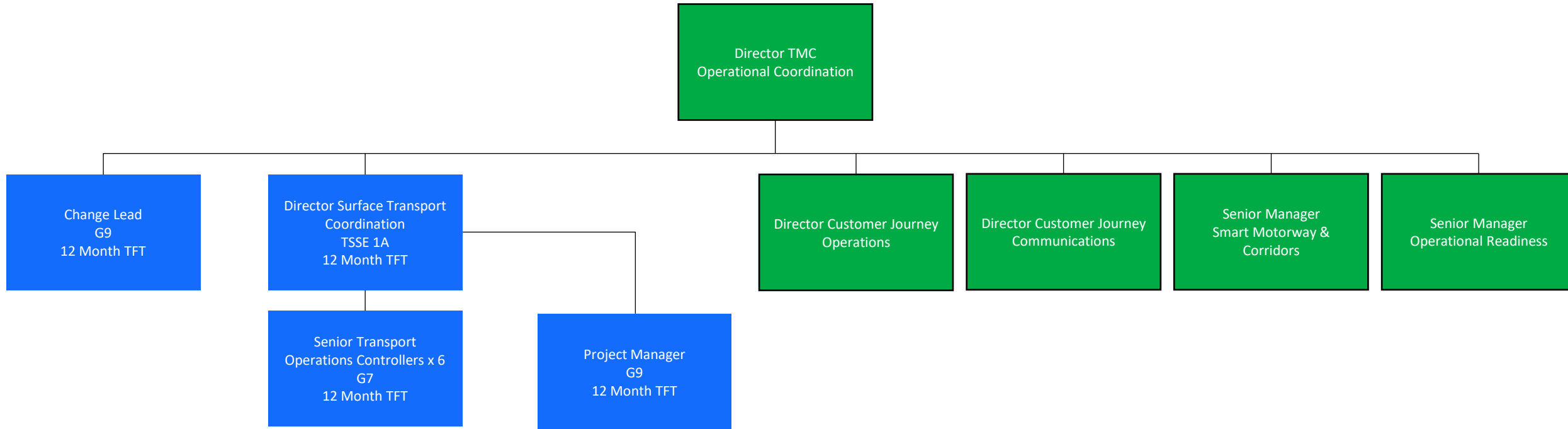
Collaboration with private bus operators and the Transport Operations Room to jointly resolve issues impacting day of operations

Work towards the final surface transport operating model

Long term benefits

- Enhanced collaboration with transport partners to increase operational awareness across our network
- Provide a better understanding of our operators needs and alignment to transport outcomes
- Greater ability to better inform and keeping our stakeholders updated of surface network issues
- Additional resources to coordinate Surface Transport

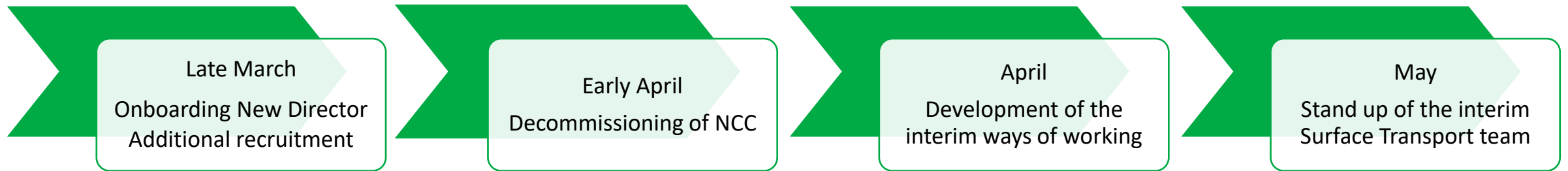
Interim Surface Transport Structure



Current

New

Priority Timeline Overview



What does this mean for us?

- Recruitment of additional staff in the TOR to support the Surface Transport function
- Greater distribution of work
- Involvement in developing the future vision of the TMC – ways of working
- Increasing TOR capability



What happens next?

- Recruitment and onboarding of interim surface transport team
- Development of the interim ways of working team to help transition into the TOR
- Build a working group to review and continue developing the future vision of the TMC



Follow Up

If you would like to ask any questions or require any additional information please email:

CJMfeedback@transport.nsw.gov.au

FAQ will be made available



TRANSPORT



TRANSPORT TAXIS TRAINS TRUCKS TRAN