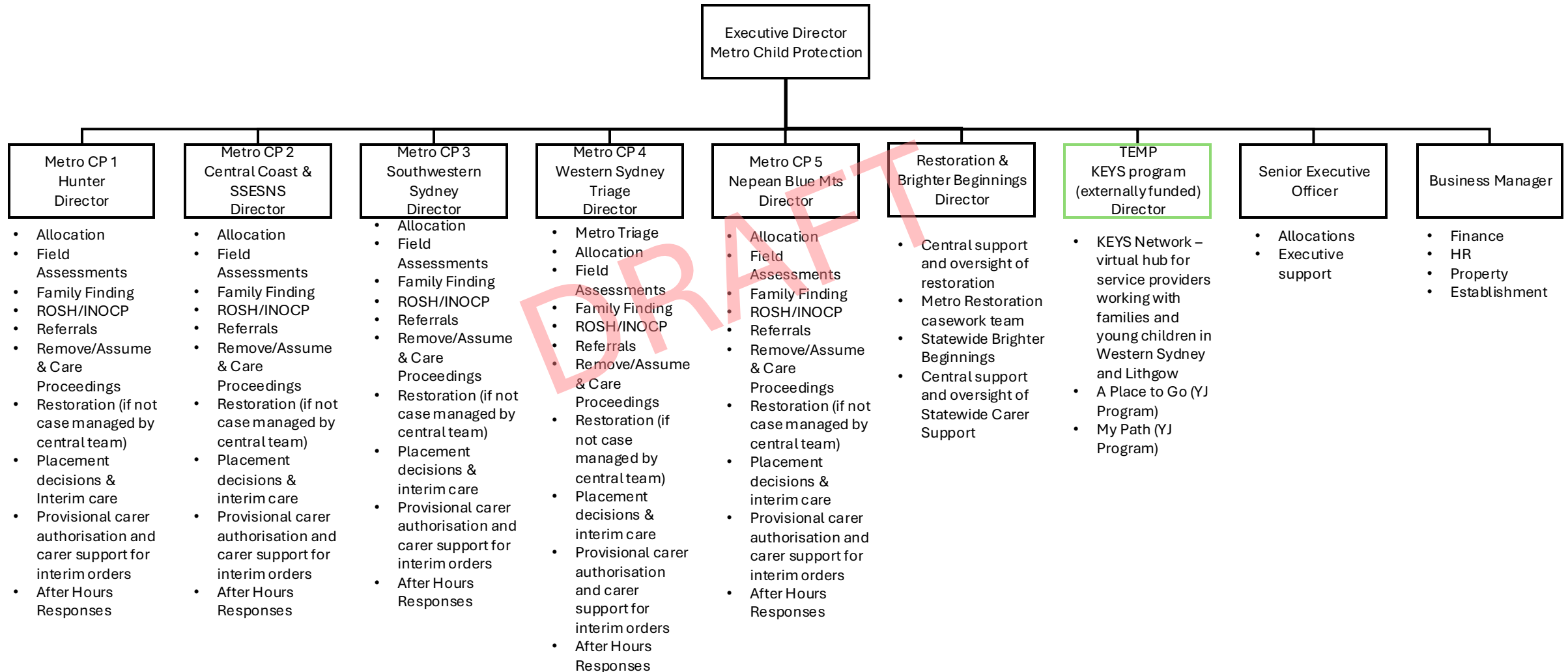


Metro Child Protection, Restoration & Brighter Beginnings, KEYS Program

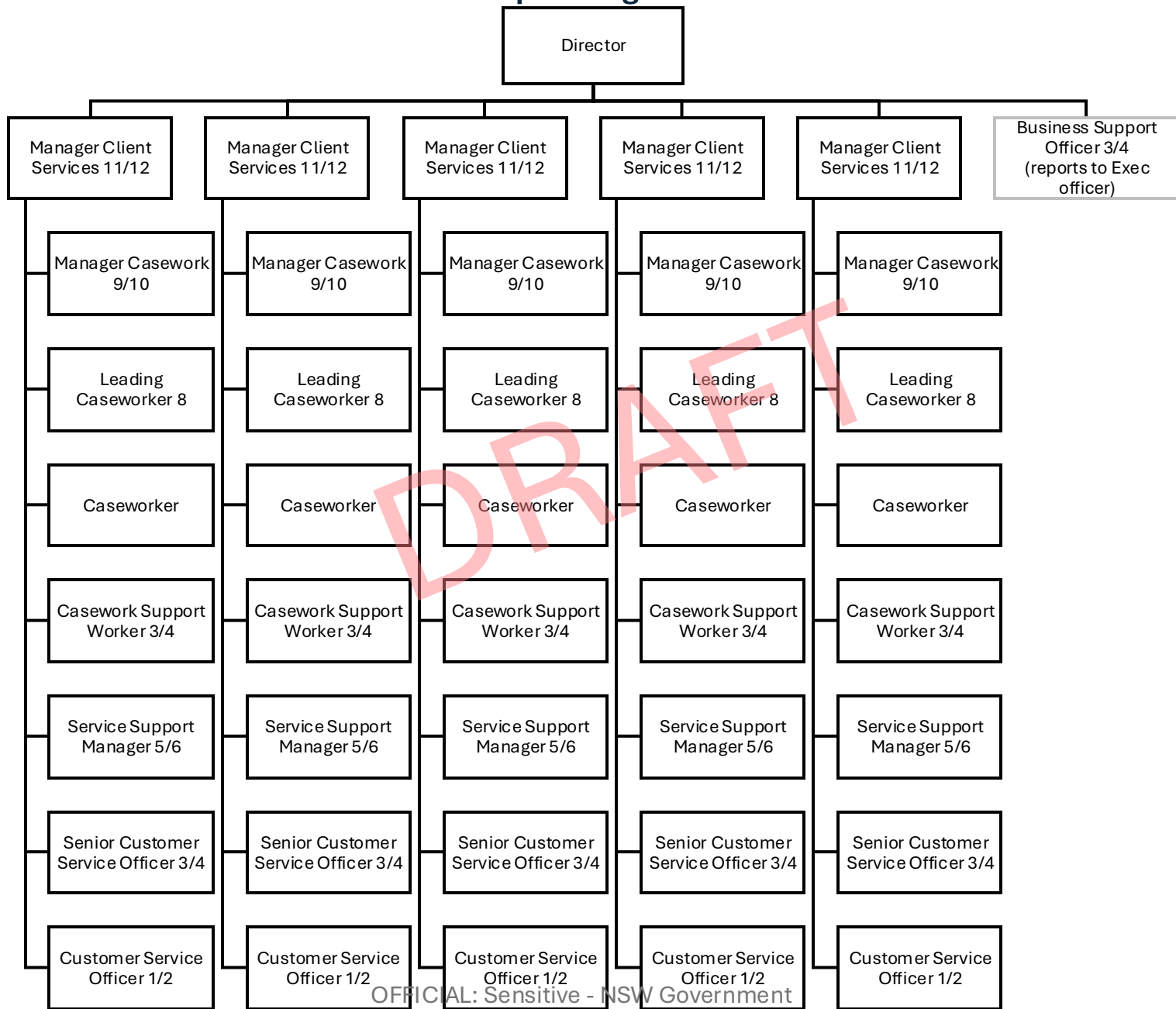
CPP Operating Model



The draft charts show the **future state** areas of responsibility once **all phases of implementation** of the new model are complete. This means they include **changes beyond Phase 2** of implementation.

Metro CP 1 – Hunter

CPP Operating Model



CSCs covered:

- Cessnock
- Charlestown
- Maitland
- Mayfield
- Muswellbrook
- Raymond Terrace
- Taree

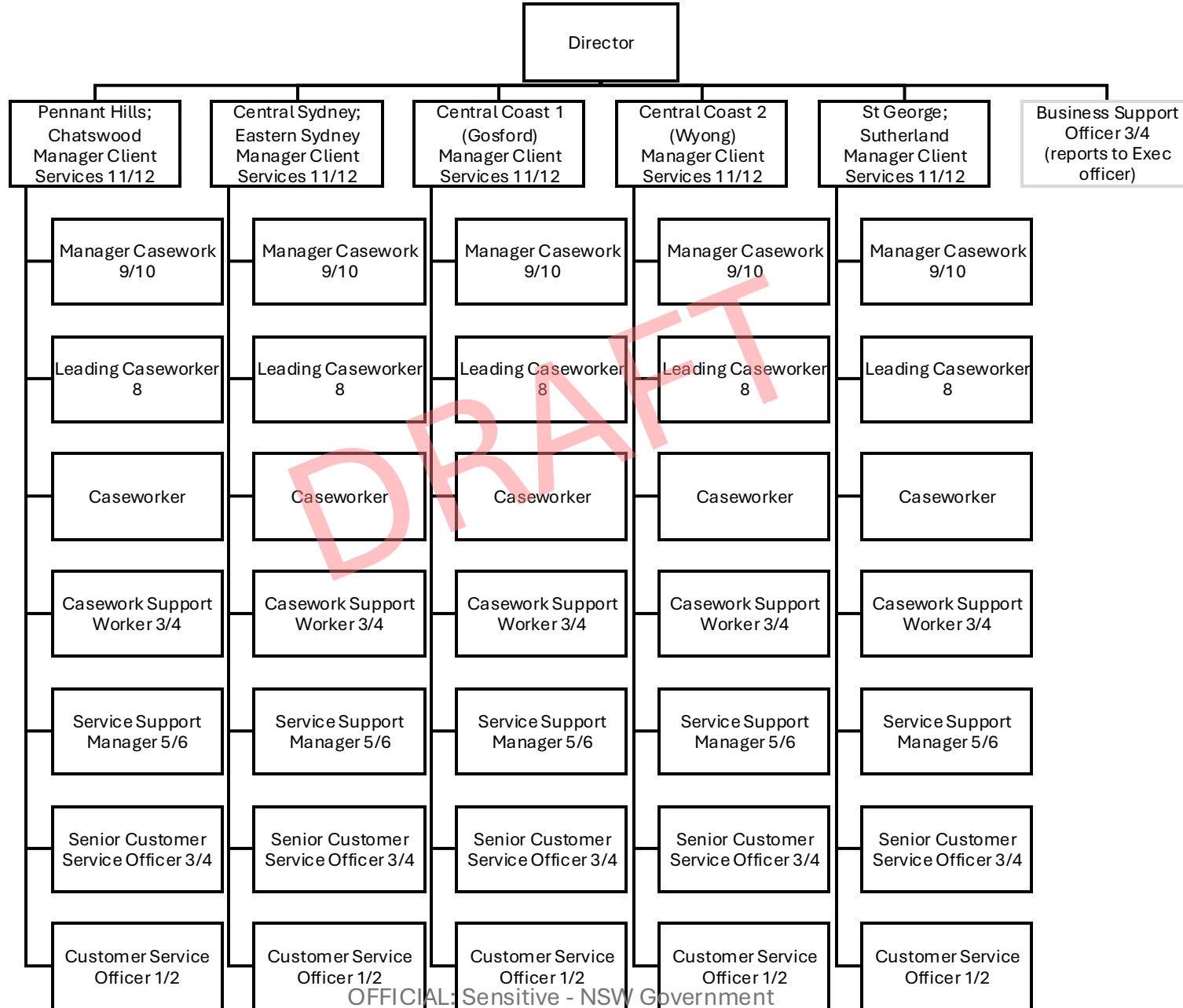


Metro CP 2 – Central Coast, Northern Sydney, Sydney, South Eastern Sydney

CPP Operating Model

CSCs covered:

- Central Sydney
- Chatswood
- Eastern Sydney
- Central Coast (Gosford)
- Central Coast (Wyong)
- Pennant Hills
- St George
- Sutherland

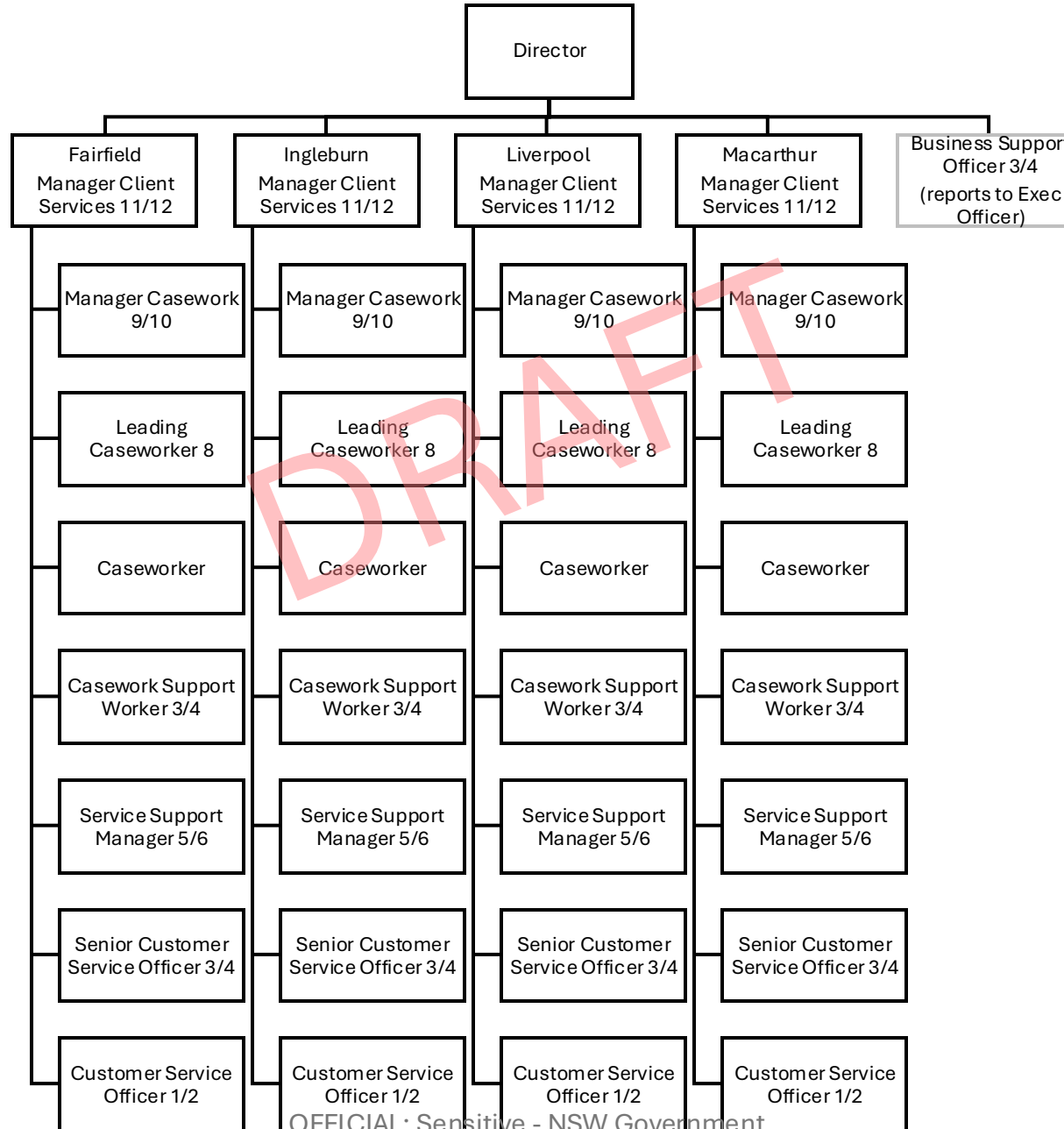


OFFICIAL: Sensitive - NSW Government



Metro CP 3 – Southwest Sydney

OFFICIAL CPP Operating Model



CSCs covered:

- Fairfield
- Ingleburn
- Liverpool
- Macarthur

OFFICIAL : Sensitive - NSW Government

OFFICIAL

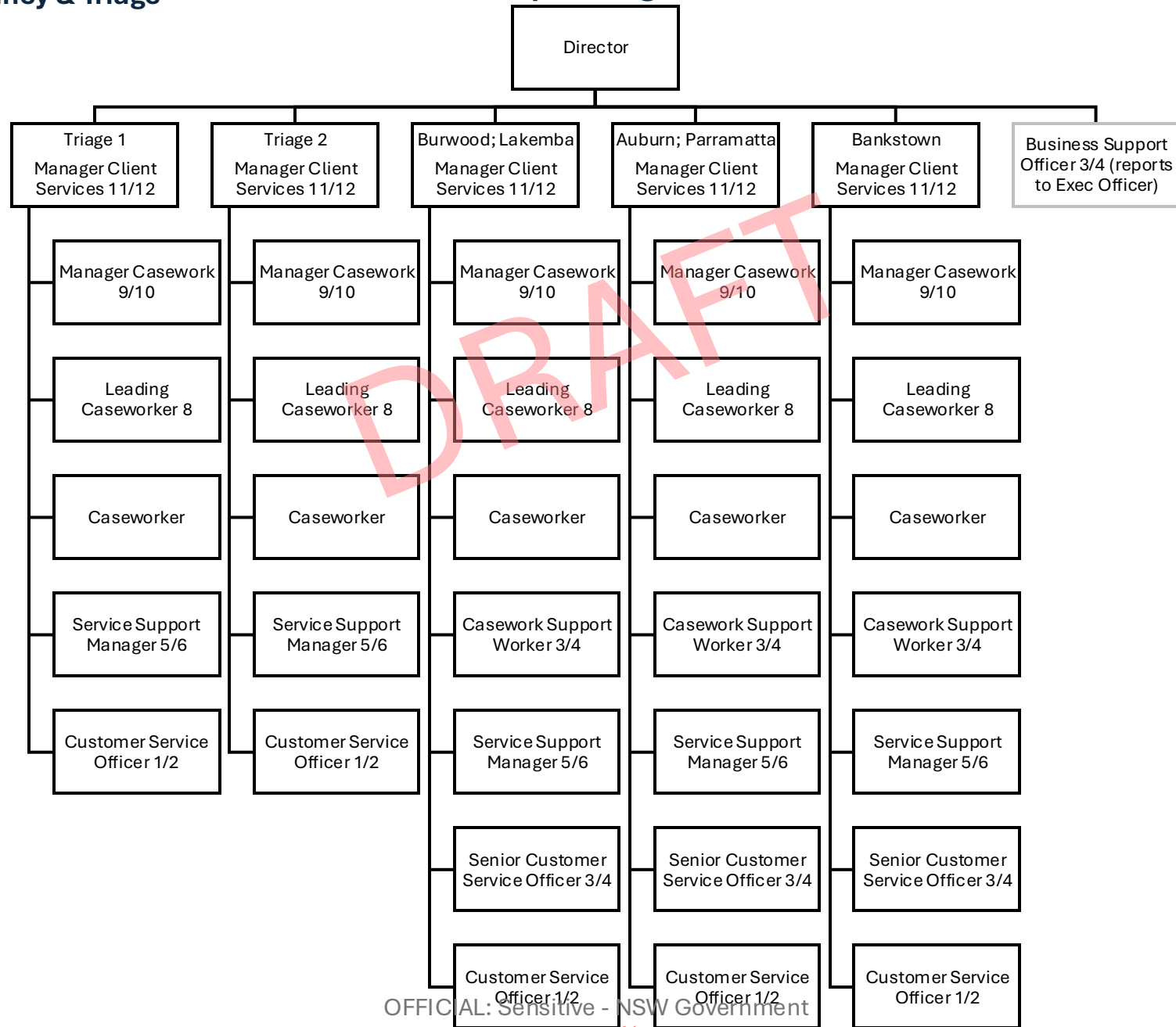


Metro CP 4 – Western Sydney & Triage

OFFICIAL
CPP Operating Model

CSCs covered:

- Auburn
- Bankstown
- Burwood
- Lakemba
- Parramatta
- Triage

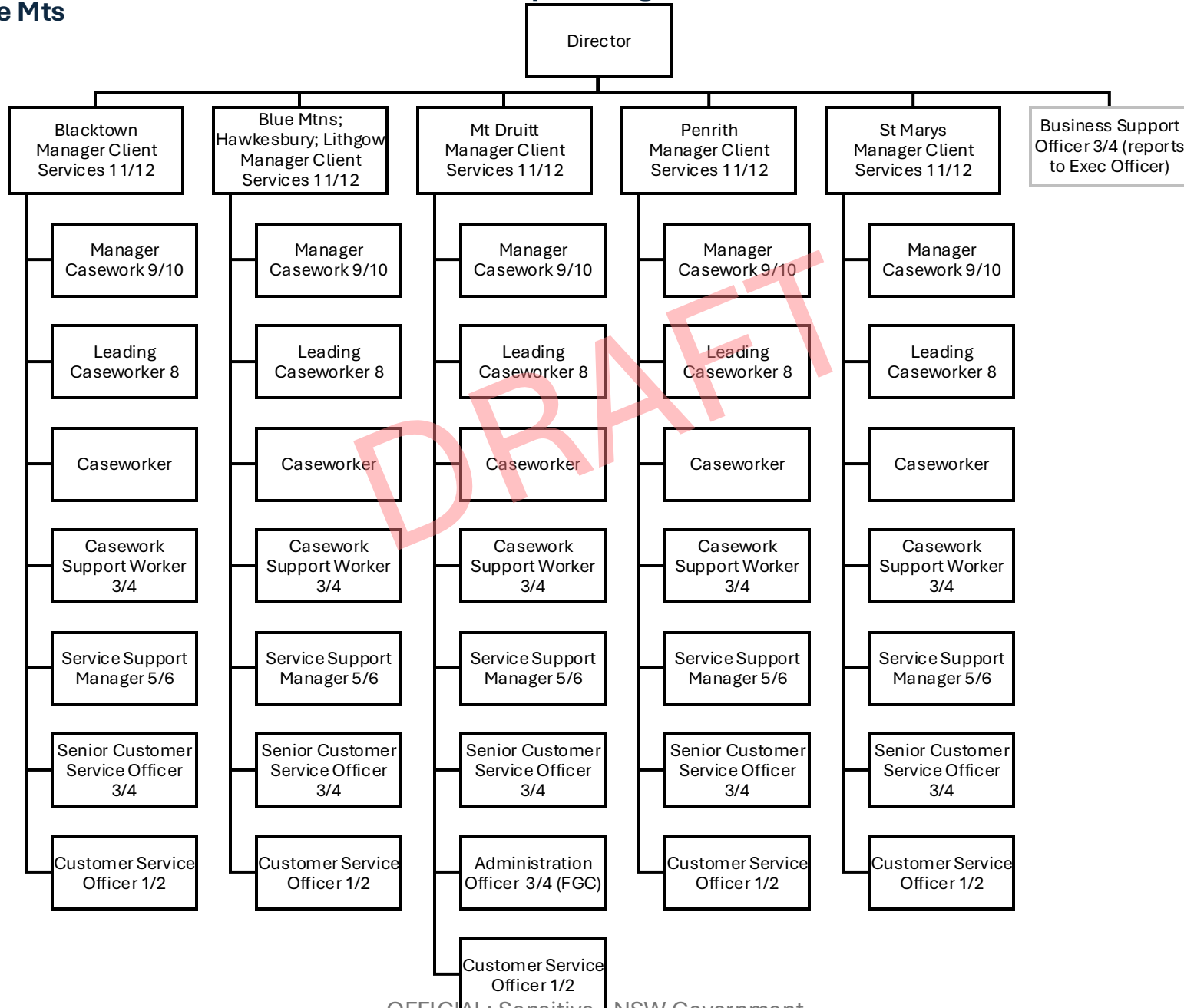


OFFICIAL
CPP Operating Model

Metro CP 5 – Nepean Blue Mts

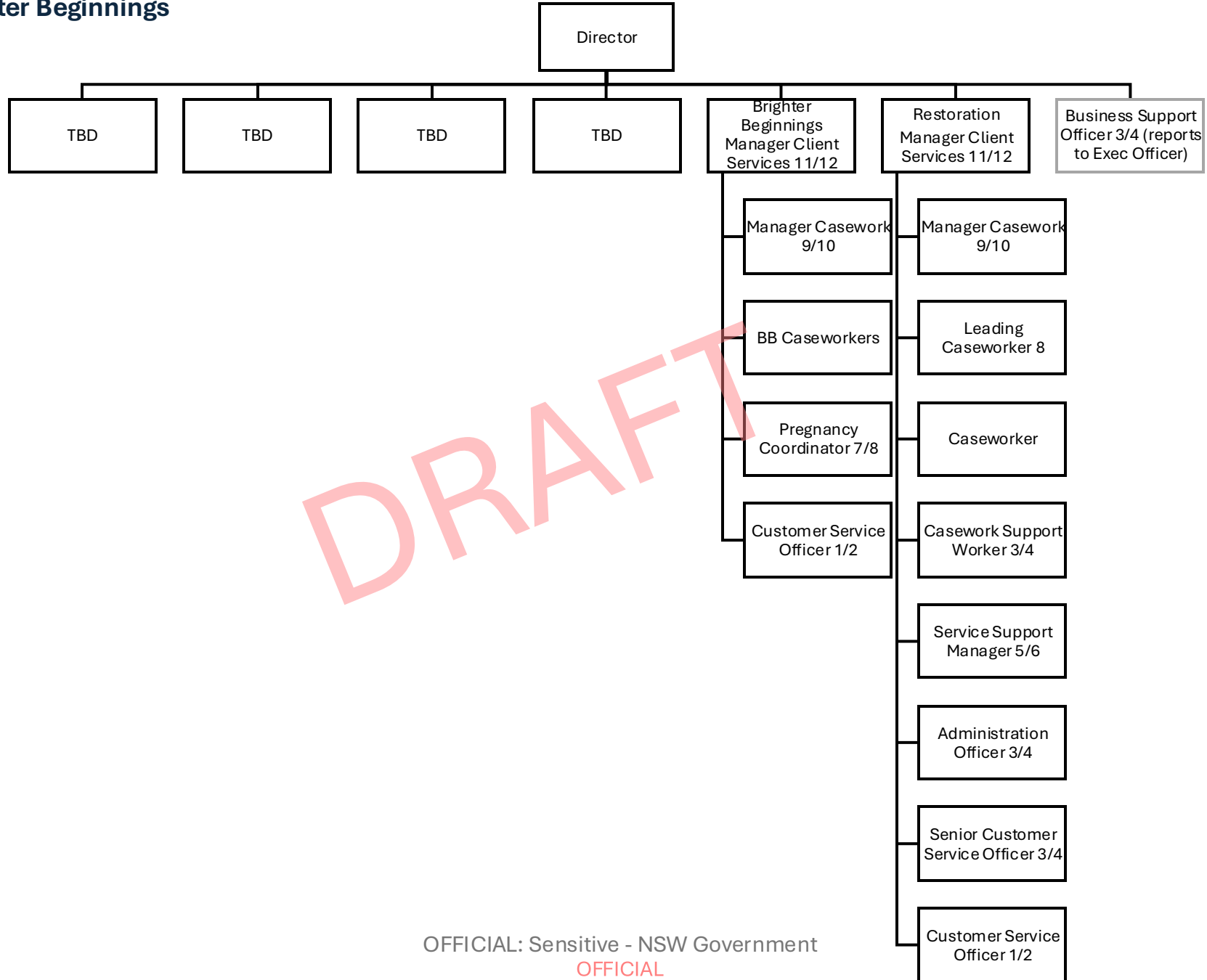
CSCs covered:

- Blacktown
- Blue Mts
- Hawkesbury
- Lithgow
- Mt Drutt
- Penrith
- St Marys



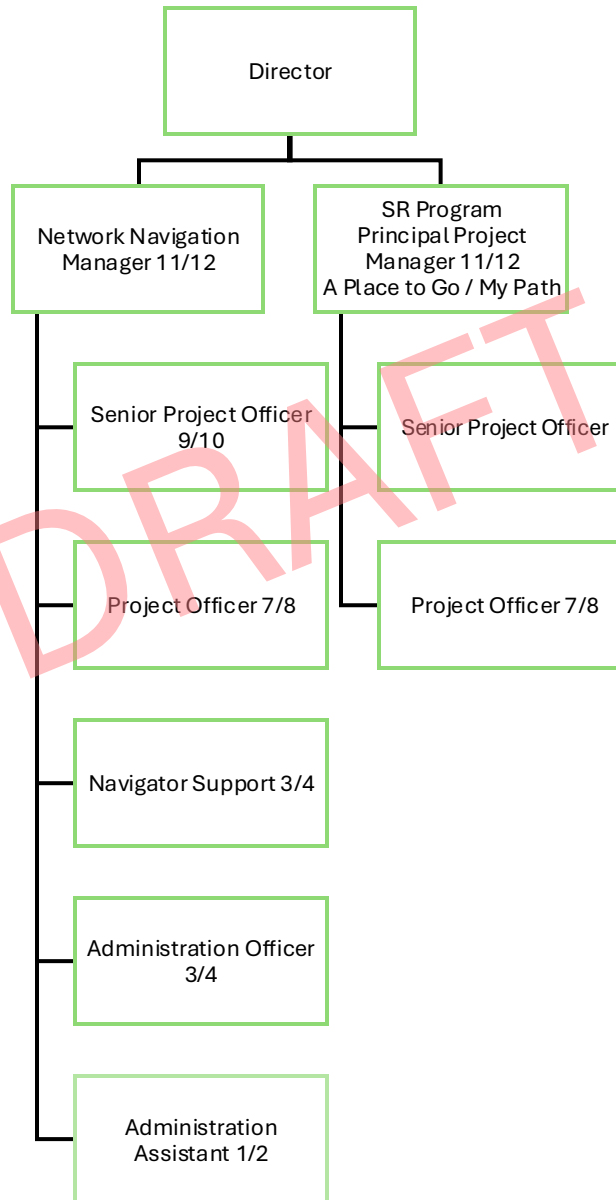
Restoration & Brighter Beginnings

OFFICIAL CPP Operating Model



DRAFT

CPP Operating Model



OFFICIAL: Sensitive - NSW Government



CPP Operating Model

