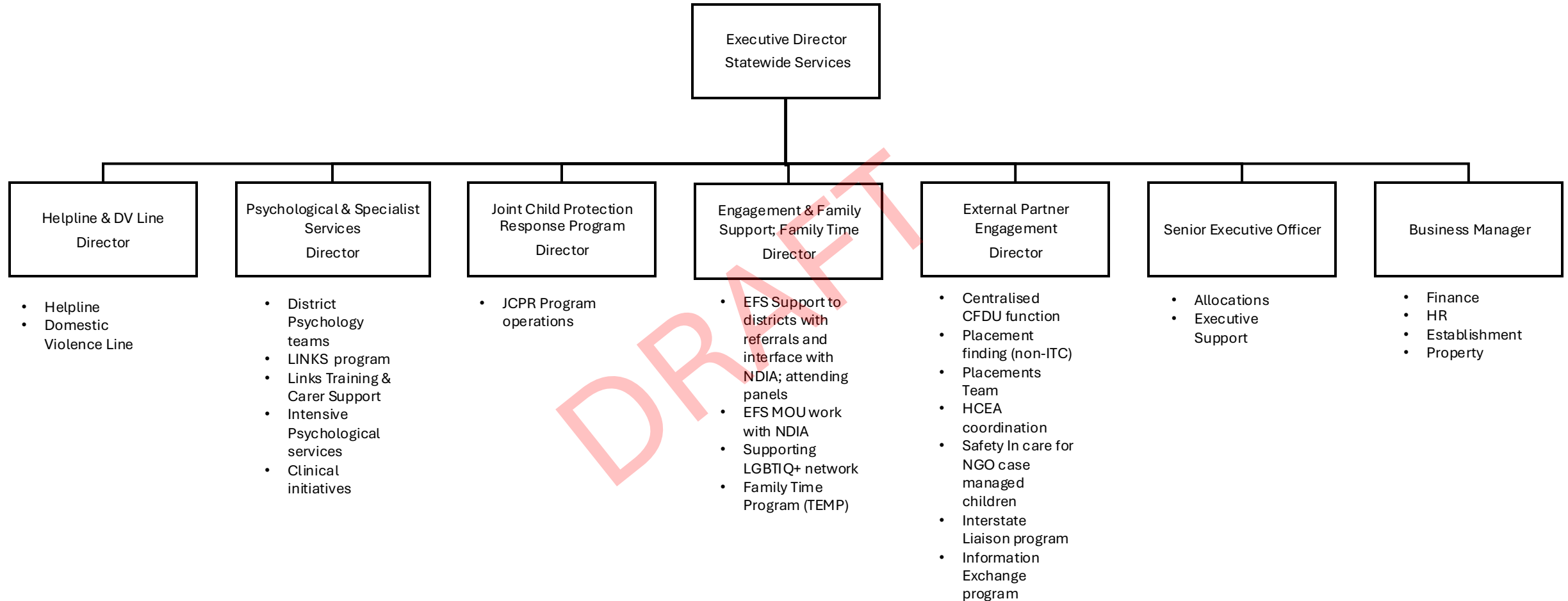


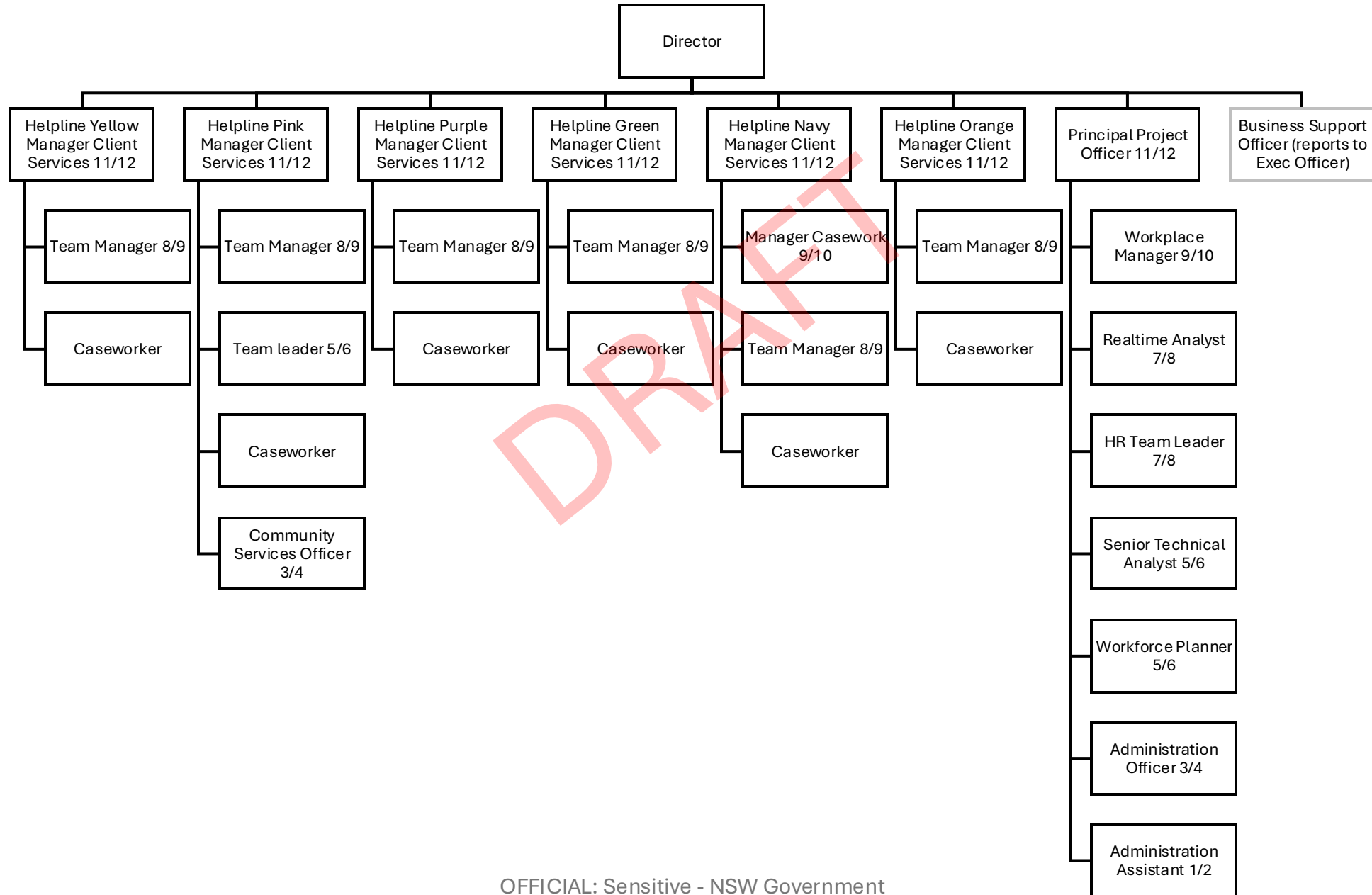
CPP Operating Model



The draft charts show the **future state** areas of responsibility once **all phases of implementation** of the new model are complete. This means they include **changes beyond Phase 2** of implementation.

Helpline & Domestic Violence Line

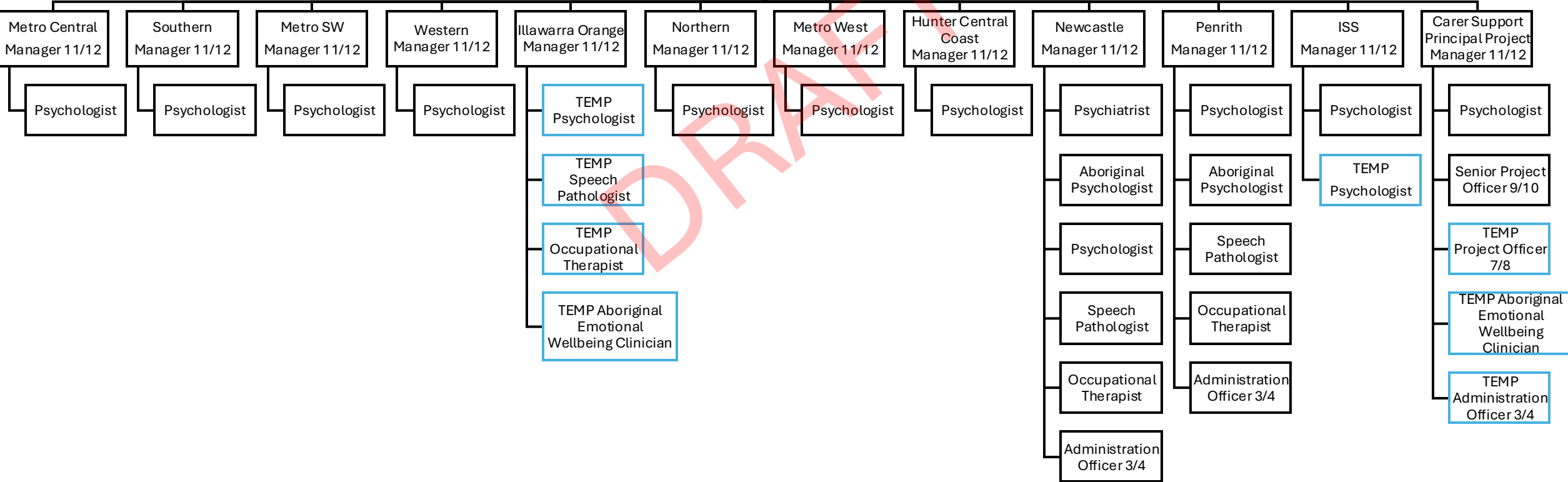
CPP Operating Model



CPP Operating Model

Director

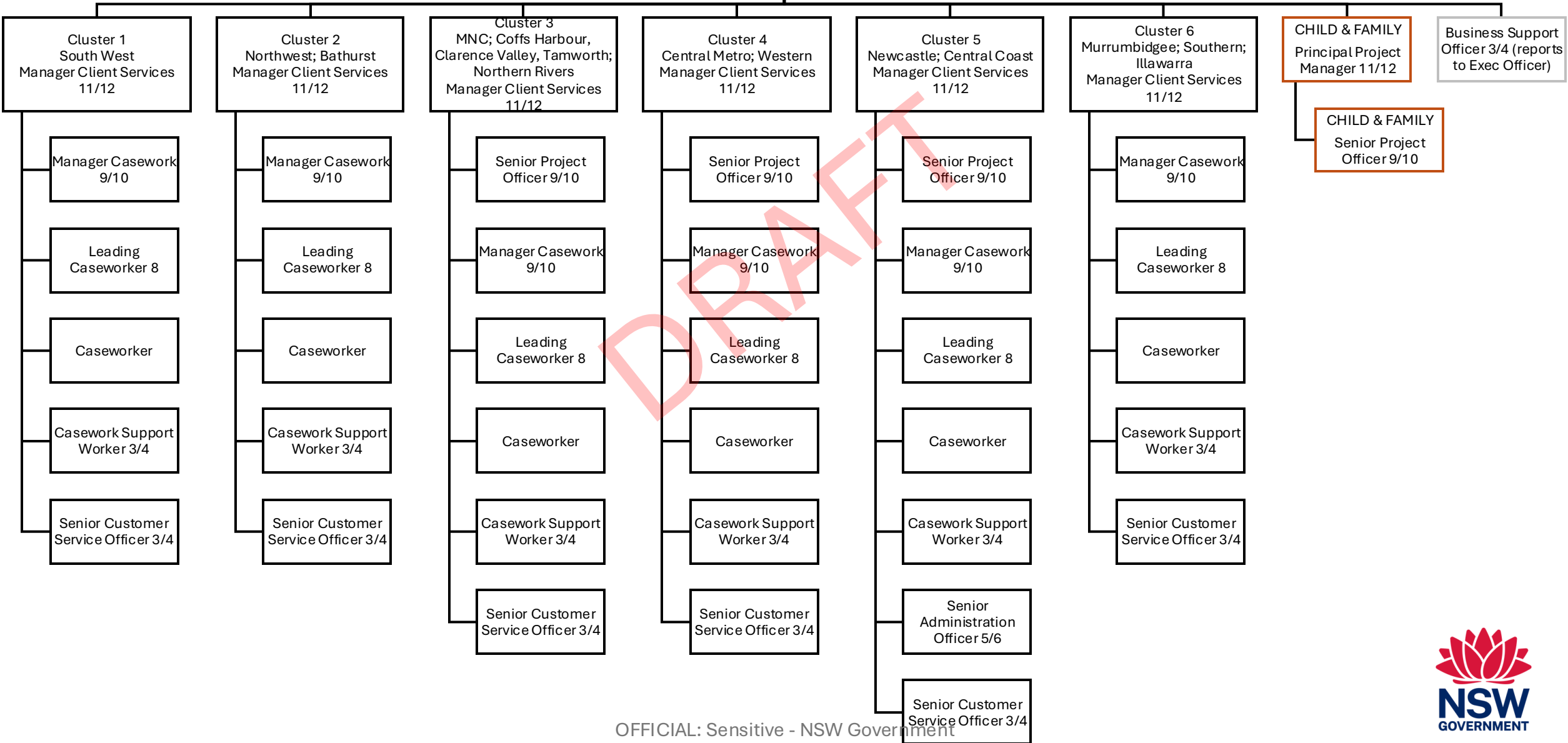
Business Support Officer 3/4 (reports to Exec Officer)



Joint Child Protection Response Program

OFFICIAL CPP Operating Model

Director



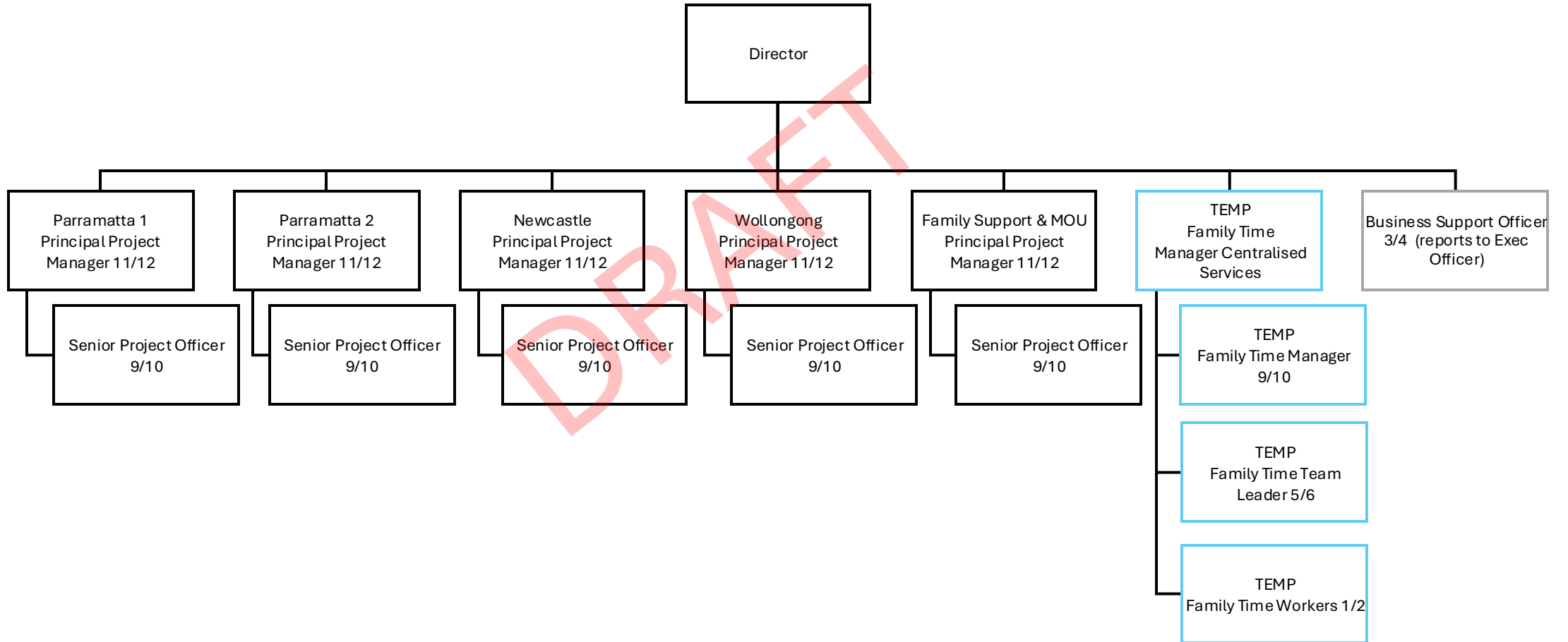
OFFICIAL: Sensitive - NSW Government

OFFICIAL

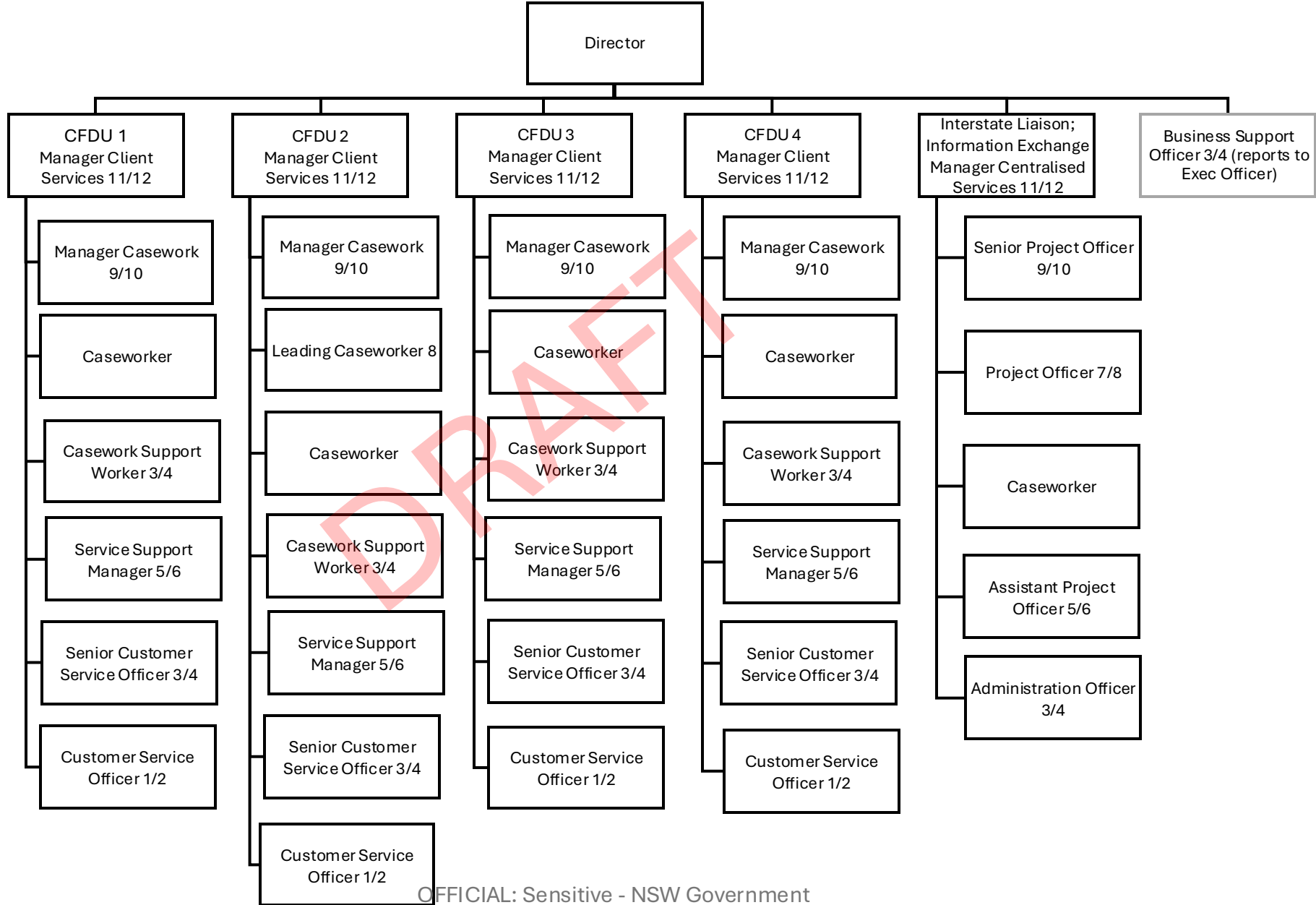


Engagement & Family Support & Family Time

CPP Operating Model



CPP Operating Model



CPP Operating Model

